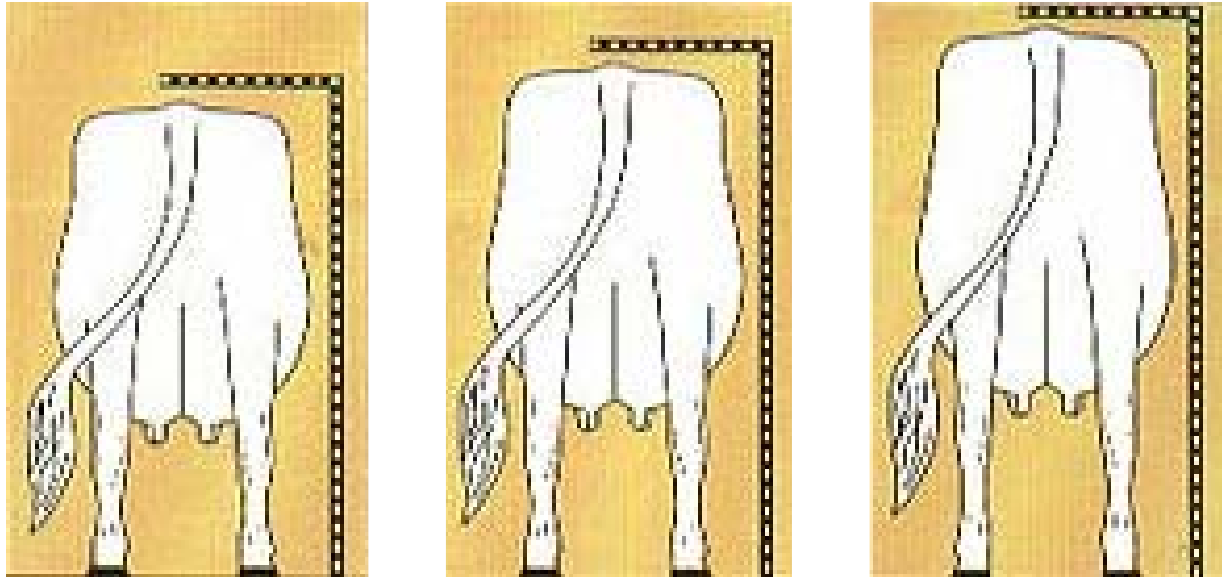


# Sađrı Yksekliđi

$$h^2 = 0.42$$

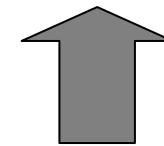


① ② ③ ④ ⑤ ⑥ ⑦ ⑧ ⑨

130

140

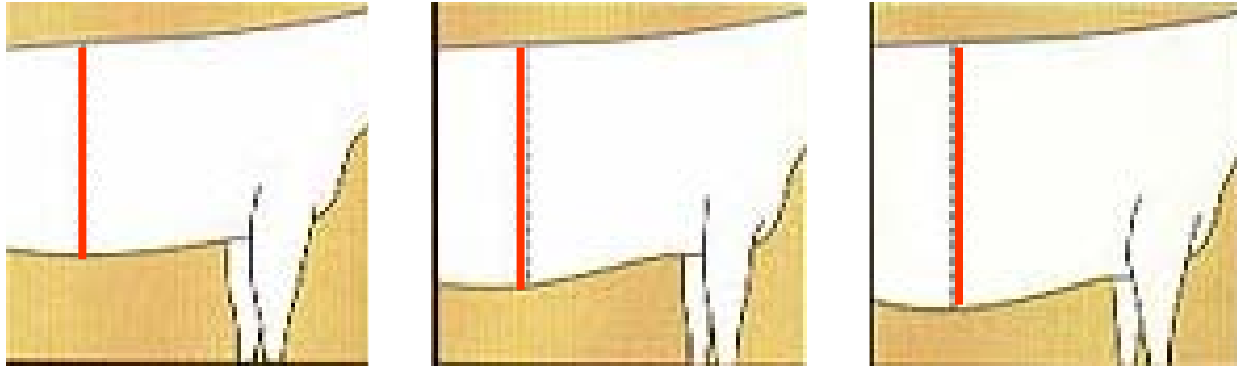
150 cm



Ref: Holstein Ass USA &  
Holstein Canada

# Vücut Derinliği

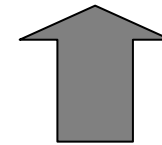
$$h^2 = 0.37$$



- ①      ②      ③      ④      ⑤      ⑥      ⑦      ⑧      ⑨

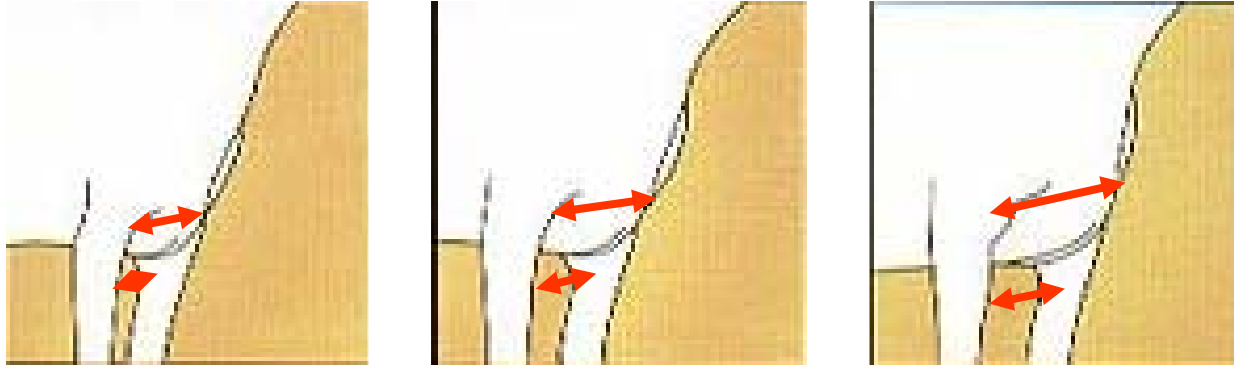
**Sığ - Shallow**

**Derin - Deep**



# Göğüs Geniřliđi

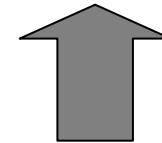
$h^2 = 0.31$



① ② ③ ④ ⑤ ⑥ ⑦ ⑧ ⑨

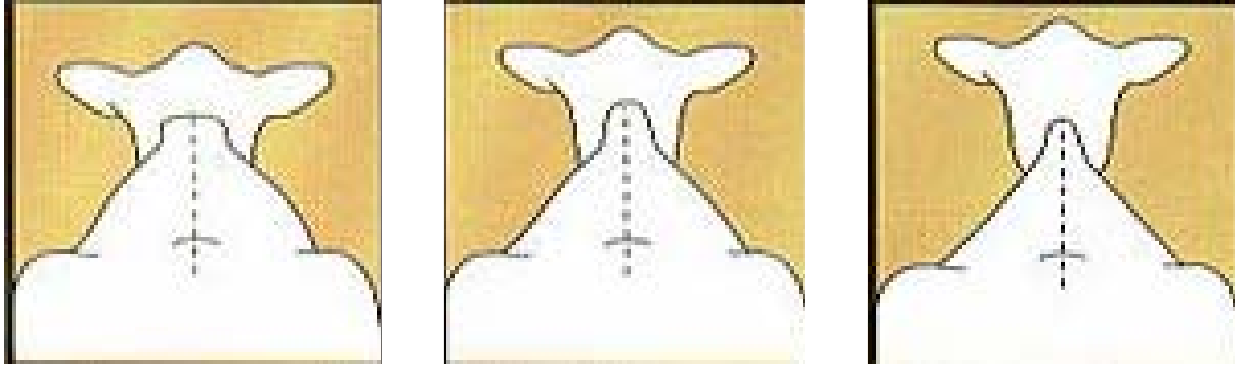
**Dar - Narrow**

**Geniř - Wide**



# Sütçülük karakteri

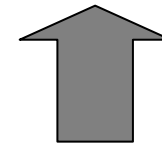
$$h^2 = 0.29$$



① ② ③ ④ ⑤ ⑥ ⑦ ⑧ ⑨

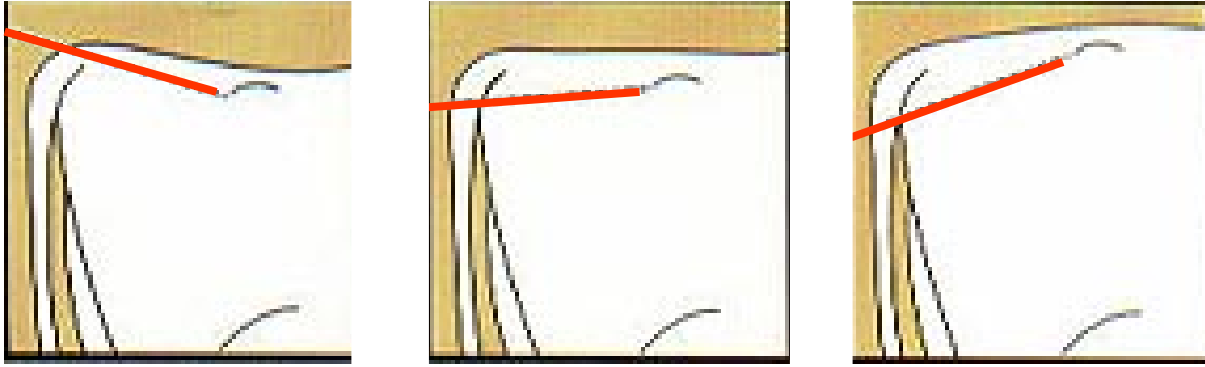
**Açısı Yok - Not angular**

**Açısı Var - Angular**



# Sağrı Eğimi

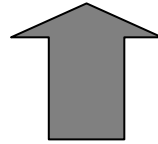
$$h^2 = 0.33$$



① ② ③ ④ ⑤ ⑥ ⑦ ⑧ ⑨

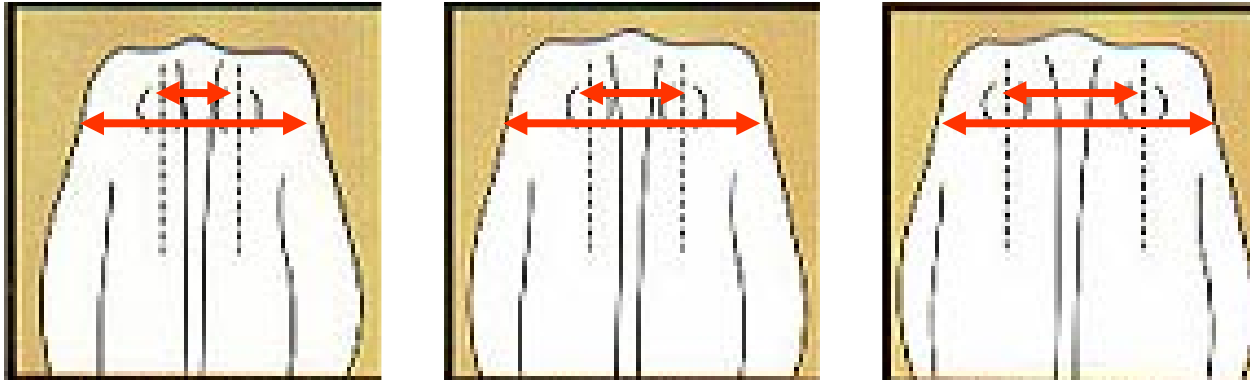
Yüksek - High

Düşük - Low



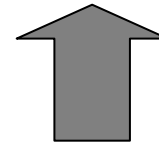
# Kalça Geniřliđi

$$h^2 = 0.26$$



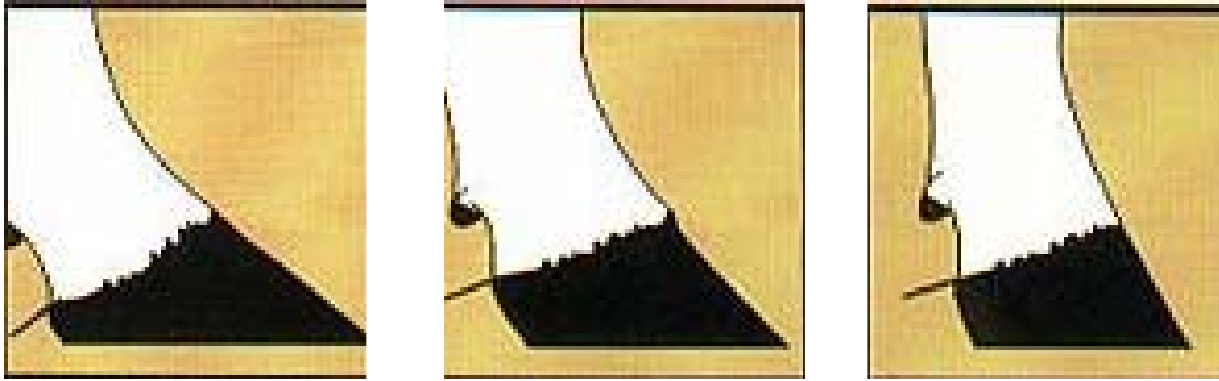
**Dar - Narrow**

**Geniř - Wide**



# Ayak Açısı

$h^2 = 0.15$



①

②

③

④

⑤

⑥

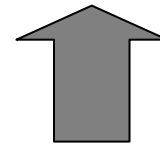
⑦

⑧

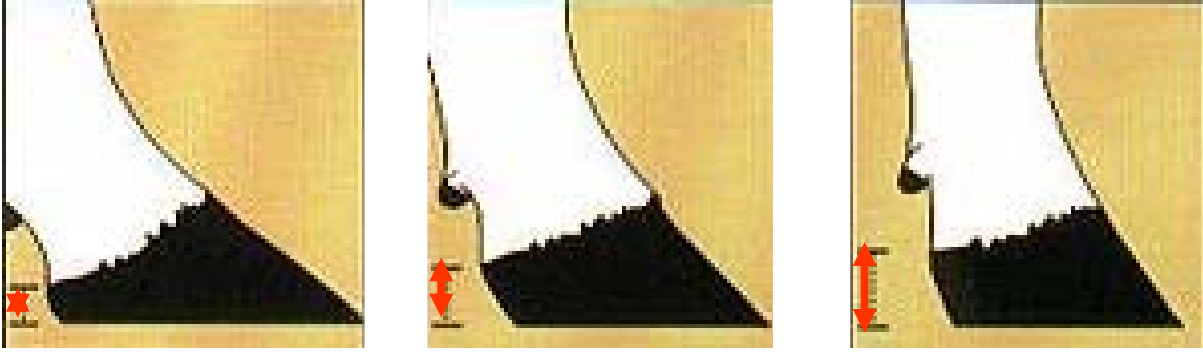
⑨

**Düşük - Low**

**Dik - Steep**



# Ökçe Yüksekliği



①

②

③

④

⑤

⑥

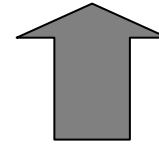
⑦

⑧

⑨

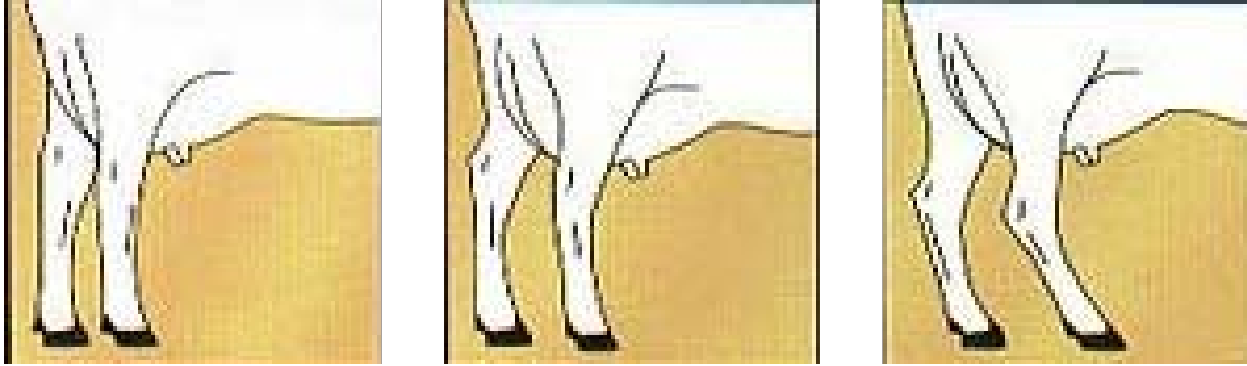
**Kısa - Shallow**

**Uzun - Deep**



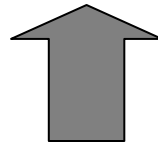
# Arka Bacak Yandan Görünüşü

$h^2 = 0.21$



① ② ③ ④ ⑤ ⑥ ⑦ ⑧ ⑨

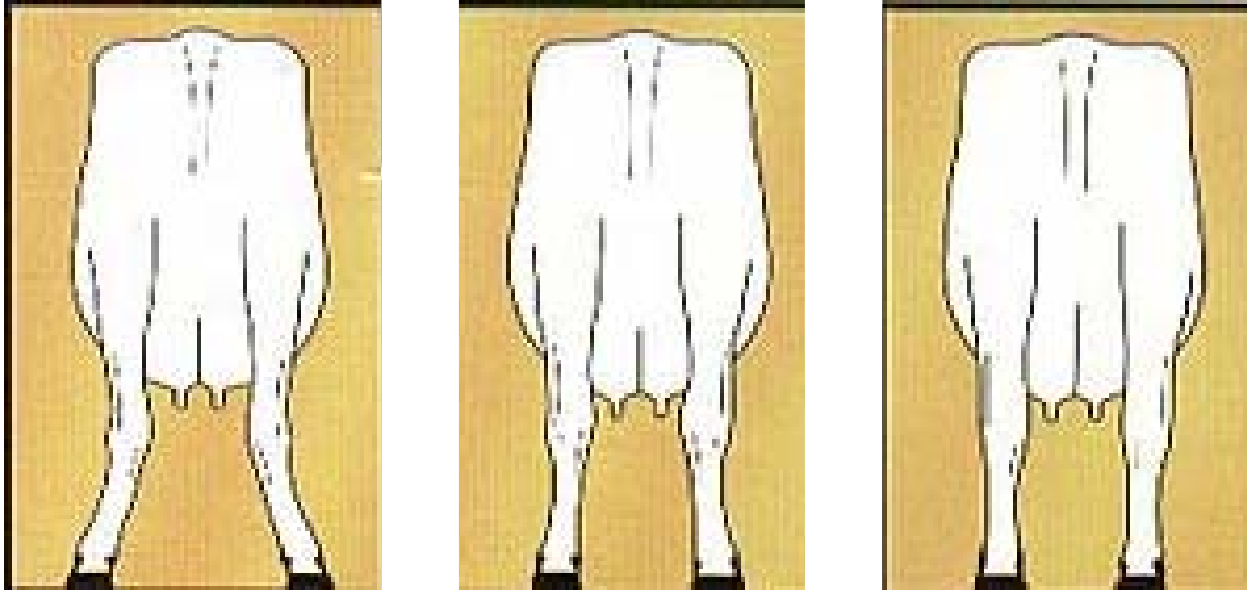
Dik - Posty



Öne eğimli - Sickle

# Arka Bacak Arkadan Görünüşü

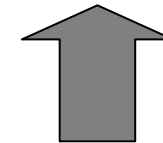
$h^2 = 0.11$



① ② ③ ④ ⑤ ⑥ ⑦ ⑧ ⑨

**İç bükey - Hock-in**

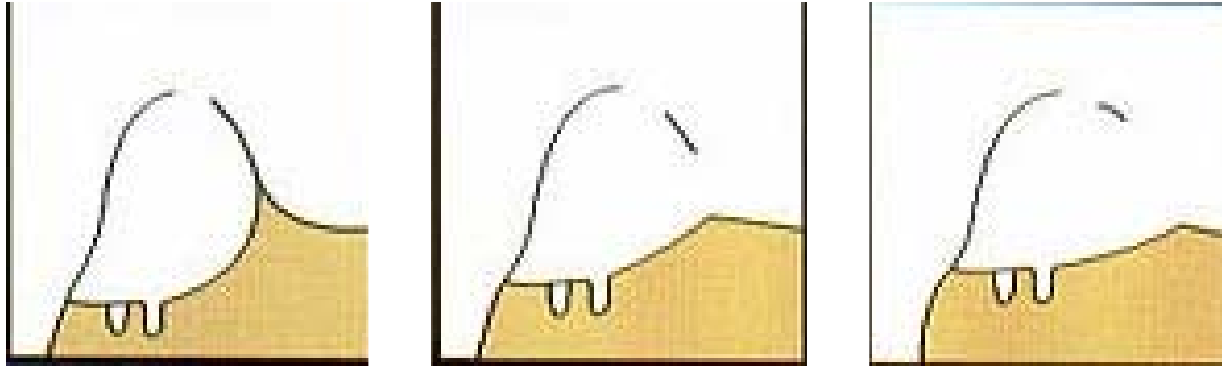
**Düz - Straight**



Ref: Holstein Ass USA &  
Holstein Canada

# Ön Meme Bağlantısı

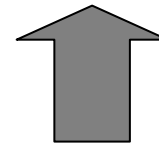
$h^2 = 0.29$



① ② ③ ④ ⑤ ⑥ ⑦ ⑧ ⑨

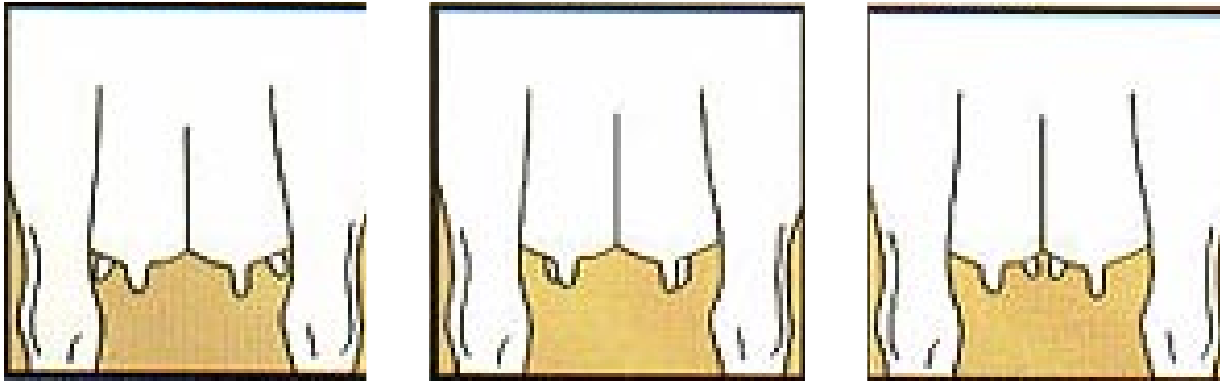
Zayıf - Weak

Güçlü - Strong



# Ön Memebaşı Yerleşimi

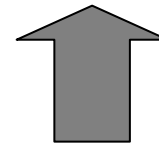
$h^2 = 0.26$



① ② ③ ④ ⑤ ⑥ ⑦ ⑧ ⑨

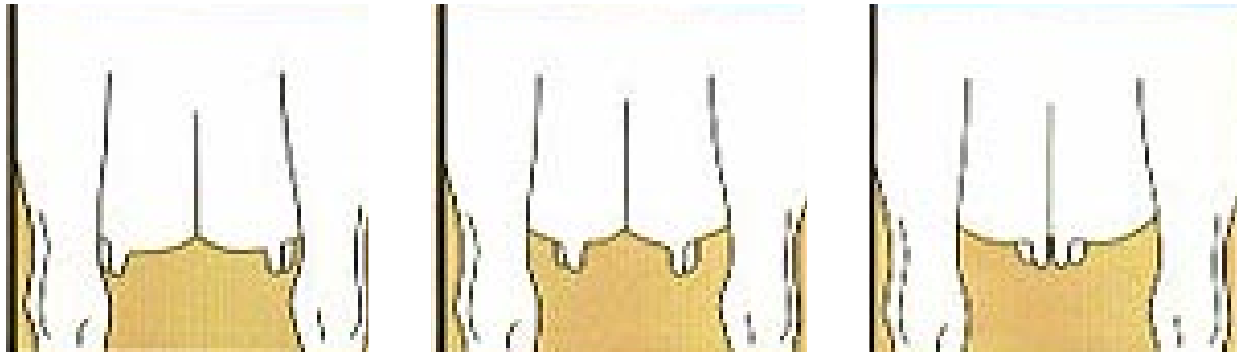
**Dışa dönük - Outside**

**İçe dönük - Inside**



# Arka Memebaşı Yerleşimi

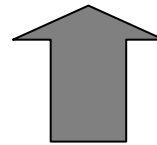
$h^2 = 0.30$



① ② ③ ④ ⑤ ⑥ ⑦ ⑧ ⑨

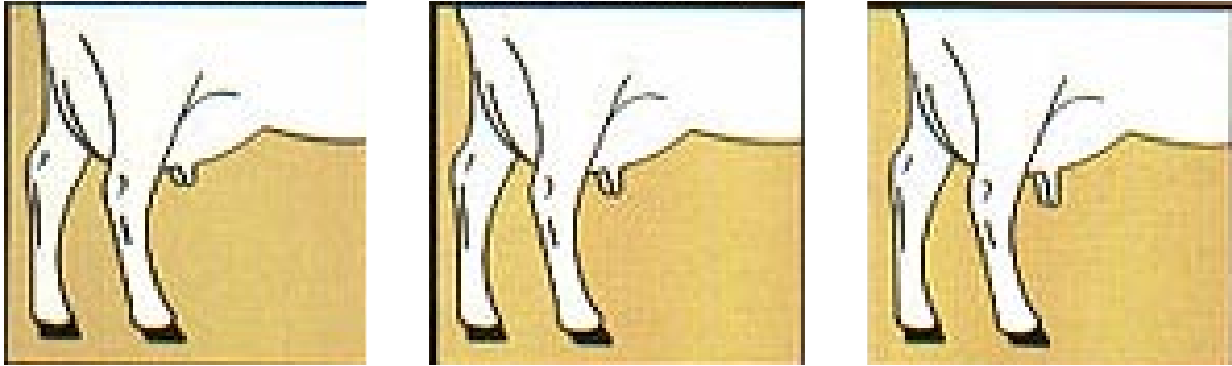
Dışa dönük - Outside

İçe dönük - Inside



# Ön Memebaşı Uzunluğu

$$h^2 = 0.26$$

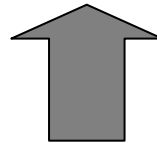


① ② ③ ④ ⑤ ⑥ ⑦ ⑧ ⑨

3 cm

Kısa - Short

5.7 cm

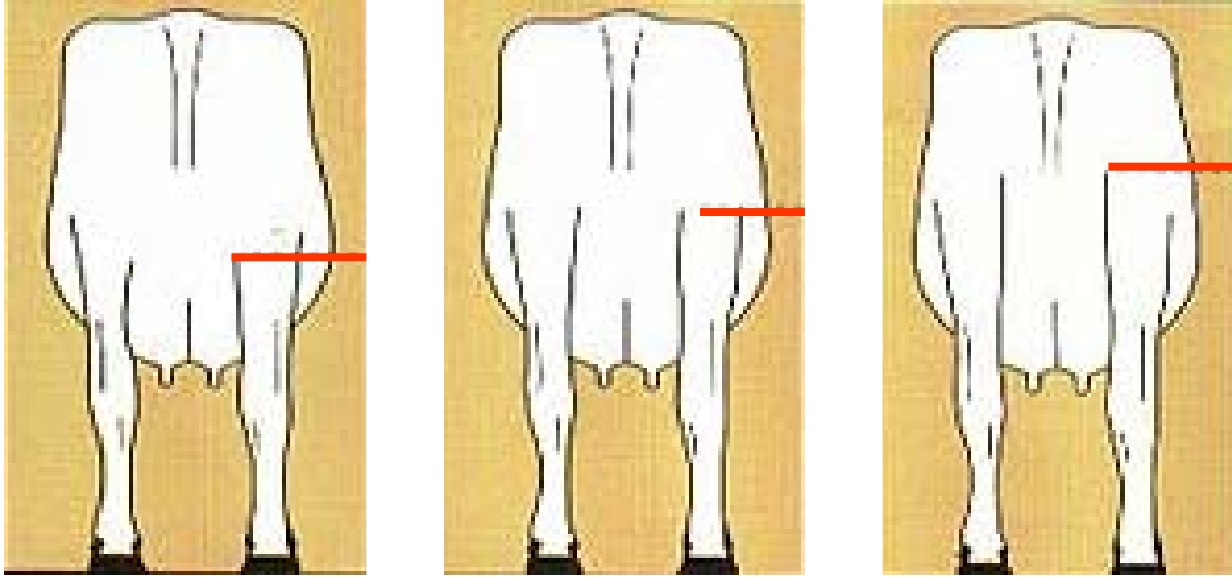


8.3 cm

Uzun - Long

# Arka Meme Yüksekliği

$h^2 = 0.28$



①

②

③

④

⑤

⑥

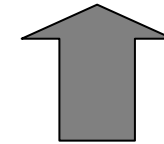
⑦

⑧

⑨

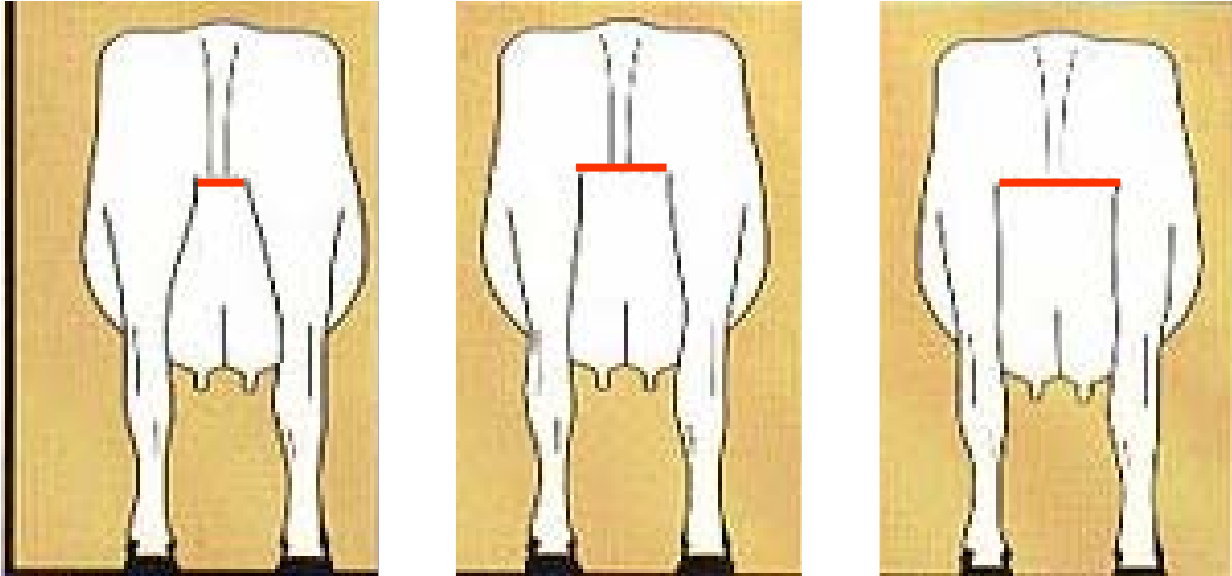
**Düşük - Low**

**Yüksek - High**



# Arka Meme Geniřliđi

$h^2 = 0.23$



①

②

③

④

⑤

⑥

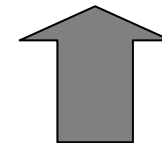
⑦

⑧

⑨

**Dar - Narrow**

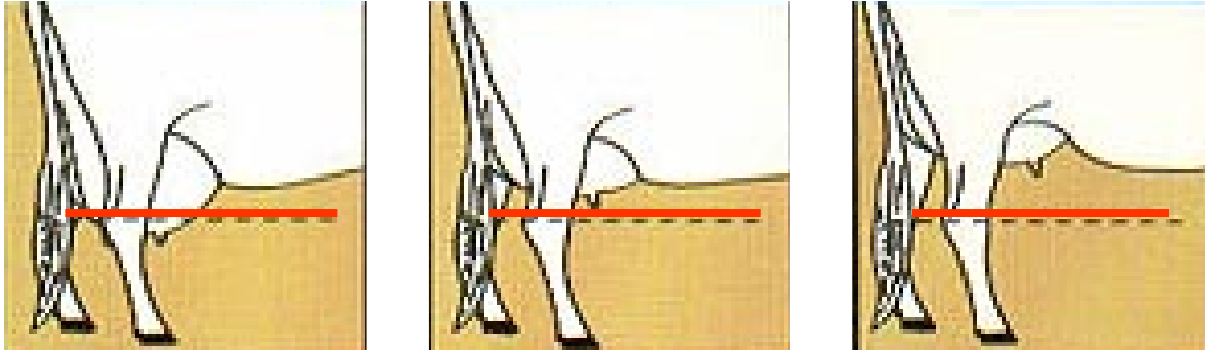
**Geniř - Wide**



Ref: Holstein Ass USA &  
Holstein Canada

# Meme Derinliđi

$$h^2 = 0.28$$

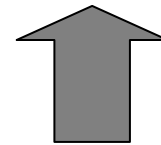


- ①      ②      ③      ④      ⑤      ⑥      ⑦      ⑧      ⑨



**Düşük - Deep**

**Yüksek - Shallow**



# Ligament veya Meme Bağlantısı

$h^2 = 0.24$

